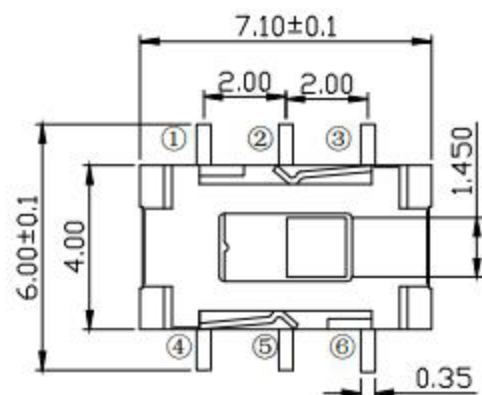
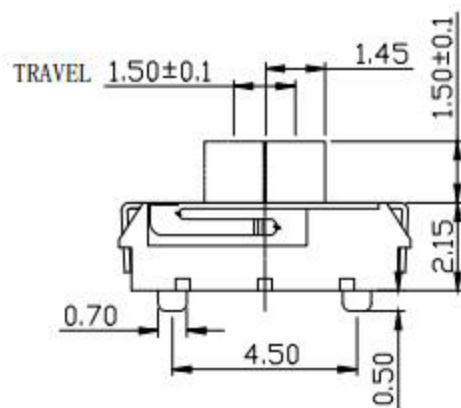
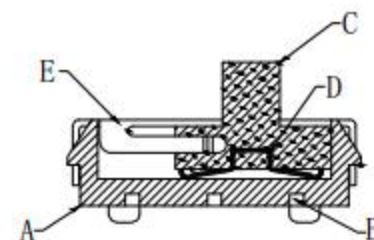
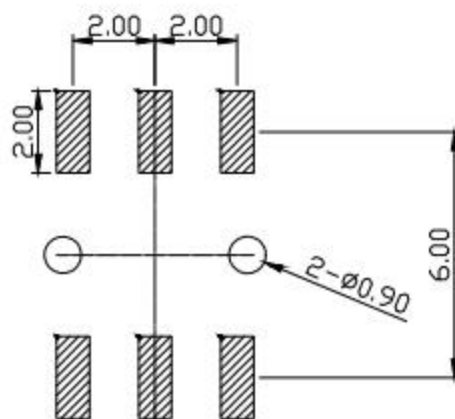
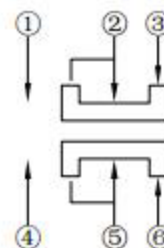


RoHS
Compliant



MODLE	
PART NO	
A	有柱
C	无柱



材料:
A底座/基座: LCP(黑色)
B嵌件: 黄铜(整体镀银与银白色)
C桃心: 高温尼龙(黑色)
D簧片: 铍青铜(镀银与银白色)
E盖板: 不锈钢(整体清洗与白色)

主要技术规格:

1. 额定值: 50mA MAX
2. 接触电阻: $\leq 70m\Omega$
3. 操作力: $150gf \pm 100gf$
4. 行程: $1.5 \pm 0.1mm$
5. 绝缘电阻: $\geq 100M\Omega$
6. 耐压强度: AC250V 50HZ/ 1Min.
7. 寿命: 1万Cycles Min
8. 额定电压: DC 12V

DONGGUAN AUGO ELECTRONIC CO., LTD.

COPYRIGHT RESERVED, PLEASE DO NOT COPY.

PART NAME		SWITCH			DRAWING	Y,C,ZHANG	DWG.No.	SBICL
PART NO.		MSS-12D20G1.5-X			CHECK	G.C.Chen	REV.	A1
	UNIT :	TOLERANCE	UP TO 5	±0.2	APPROVAL		DATE	14-03-2013
	mm	OTHERWISE	ABOVE 5~30	±0.3			ANGLE	PAGE
			ANGLE 30	±0.5	SCALE	2:1		
			ANGLE	±3				