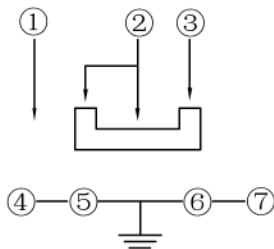
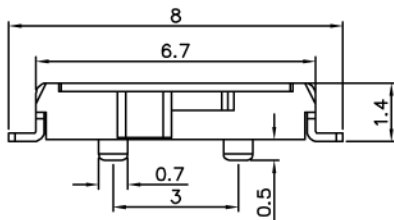
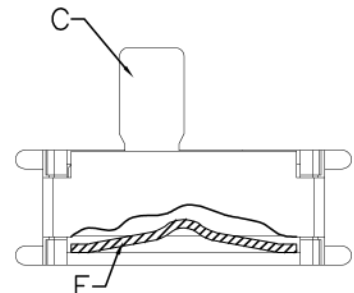
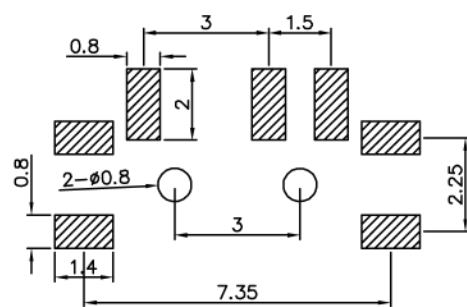
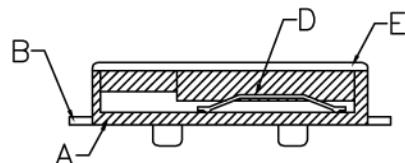


原理图



MODLE	
PART NO	H
MSK-1296S-E	1.5
MSK-1296S-J	2.5



材料:  
 A底座/基座: LCP(黑色)  
 B嵌件: 磷铜(整体镀银与银白色)  
 C桃心: 高温尼龙(白色)  
 D簧片: 铍青铜(整体镀银与银白色)  
 E盖板: C5191R(整体镀银)  
 F弹条: 不锈钢(整体清洗与银白色)

主要技术规格:  
 1. 额定值: 50mA MAX  
 2. 接触电阻:  $\leq 70m\Omega$   
 3. 操作力:  $180gf \pm 50gf$   
 4. 行程:  $1.5 \pm 0.2mm$   
 5. 绝缘电阻:  $\geq 100M\Omega$   
 6. 耐压强度: AC250V 50HZ/ 1Min.  
 7. 寿命: 1万Cycles Min  
 8. 额定电压: DC 12V

DONGGUAN AUGO ELECTRONIC CO., LTD.

PART NAME		SWITCH		DRAWING		Y,C,ZHANG	DWG.No.	SBICL
PART NO.		MSK-1296S-X		CHECK		G.C.Chen	REV.	A1
UNIT :	TOLERANCE OTHERWISE	UP TO 5	$\pm 0.2$	ANGLE	APPROVAL	DATE	PAGE	14-03-2013
		ABOVE 5~30	$\pm 0.3$					
mm		ABOVE 30	$\pm 0.5$	$0^\circ \pm 3'$	SCALE	2:1	1 OF 1	

COPYRIGHT RESERVED, PLEASE DO NOT COPY.