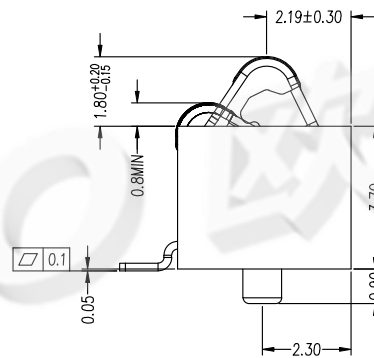
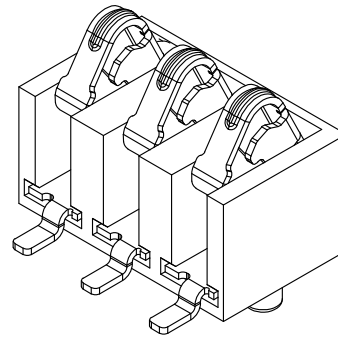
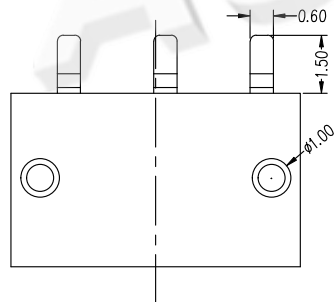
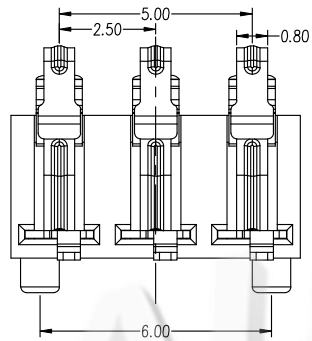
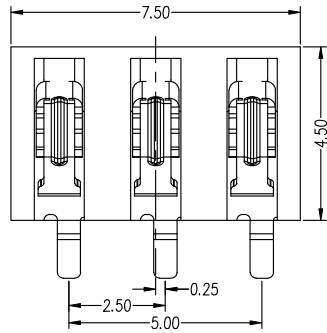
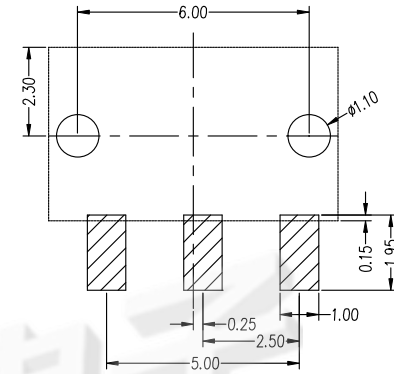


Rohs



REV.	DESCRIPTION	DRAW.	DATE.



RECOMMENDED PCB LAYOUT
TOL: (± 0.05)

Material :

Insulator : LCP(UL94V-0)

Contact : Phosphor Bronze

Contact Plated : Gold over Nickel or Tin

Specification :

Current Rating : 2A

Voltage Rating : 12V

Contact Resistance : 50m Ω

Insulation Resistance : 500M Ω

Dielectric Voltage : 500V

Operating Temperature : $-40^{\circ}\sim 85^{\circ}$

Electrical Life : 5000cycles

AUGO

AUGO ELECTRONICS CO.,LTD.

COPYRIGHT RESERVED,PLEASE DO NOT COPY.

REV:	01	UNLESS OTHERWISE SPECIFIED,TOLERANCE:		TITLE:	2.5 PITCH BATTERY CONNECTOR	DESIGN	G.C.CHEN	DATE	
SIZE:	A4	X.	± 0.20	PART NO.:	AUGO-BC-25-3PD550	DRAWING	Y.C.ZHANG	DATE	
SCALE: 1:1	UNIT: mm	X.x	± 0.15			CHECK	D.J.WANG	DATE	
SHEET: 1/1		X.xx	± 0.10			SCALE	1:1	PAGE	1 OF 1
		ANGULAR	$\pm 2^{\circ}$						