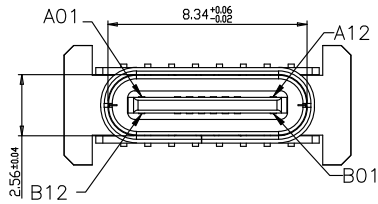


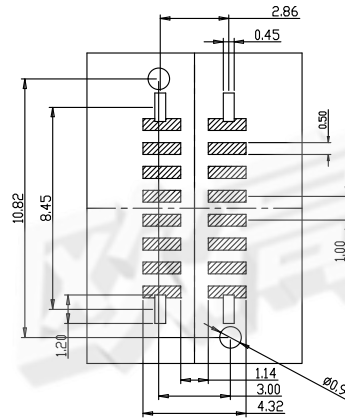
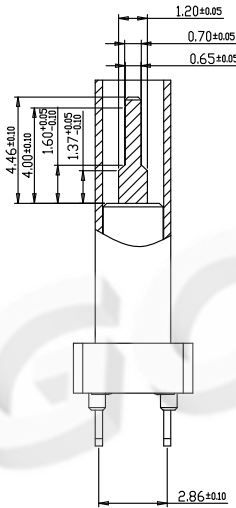
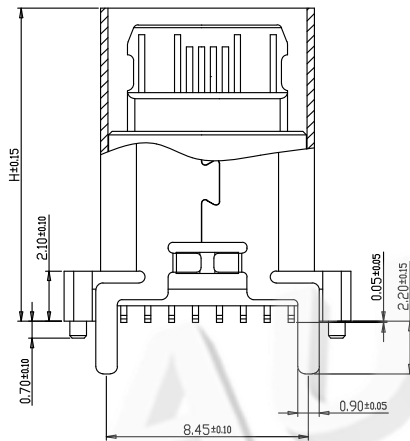
Rohs

REV.	DESCRIPTION	DRAW.	DATE.

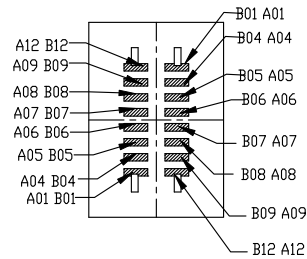
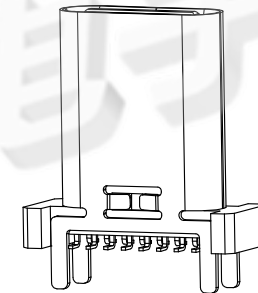


SPECIFICATIONS:

- ELECTRICAL CHARACTERISTICS:
 - CONTACT RESISTANCE: 30mΩ MAX.
 - DIELECTRIC WITHSTANDING VOLTAGE: 100V AC FOR ONE MINUTE.
 - INSULATION RESISTANCE: 100M ΩMIN. MEASURED BY 500 VDC
- MECHANICAL CHARACTERISTICS:
 - INSERTION FORCE :0.5-2.0kgf(REF.)
 - WITHDRAWAL FORCE :0.8-2.0kgf(REF.)
- LIFE TEST: 5,000 CYCLES.
- TO CONFORM TO THE KRCDNN HAZARDOUS SUBSTANCE FREE SPEC.



RECOMMENDED P.C.B. LAYOUT (T:1.00mm)
TOLERANCE UNSPECIFIED ±0.05mm



A1	GND	B12	GND
A4	VBUS	B9	VBUS
A5	CC1	B8	SBU2
A6	DP1	B7	DN2
A7	DN1	B6	DP2
A8	SBU1	B5	CC2
A9	VBUS	B4	VBUS
A12	GND	B1	GND
PIN	SIGNAL NAME	PIN	SIGNAL NAME

NO.	DESCRIPTION	MATERIAL	REMARKS	QTY
6	SHELL	STAINLESS STEEL	Ni Plated	1PCS
5	SHIELDING PLATE	STAINLESS STEEL	---	1PCS
4	NO	HIGH TEMPERATURE PLASTIC	BLACK	1PCS
3	CONTACT	COPPER ALLOY	Au/Ni Plated	1SET
2	CONTACT	COPPER ALLOY	Au/Ni Plated	1SET
1	HOUSING	HIGH TEMPERATURE PLASTIC	BLACK	1PCS

H= MM							
9.30	10.00	10.50	12.40	13.10	13.70	15.00	17.50

AUGO

AUGO ELECTRONICS CO.,LTD.

COPYRIGHT RESERVED, PLEASE DO NOT COPY.

REV:	01
SIZE:	A4
SCALE: 1:1	UNIT: mm
SHEET: 1/1	

UNLESS OTHERWISE SPECIFIED, TOLERANCE:	
X.	±0.20
X.x	±0.15
X.xx	±0.10
ANGULAR	±2°

TITLE:	TYPE-C SERIES
PART NO	TYPE-C 16PIN 四脚全插 SMD

DESIGN	H.Y.ZHU	DATE	
DRAWING	W.B.QIAO	DATE	
CHECK	G.C.CHEN	DATE	
SCALE	1:1	PAGE	1 OF 1