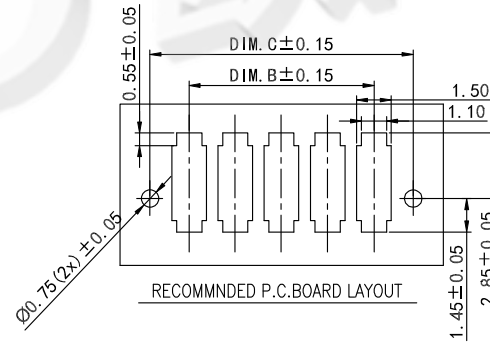
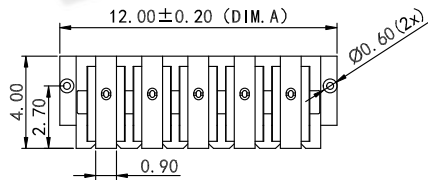
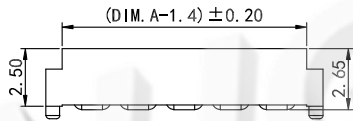
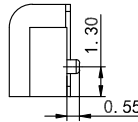
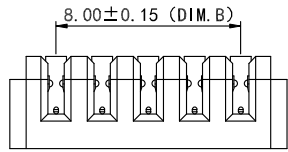
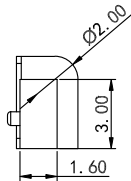
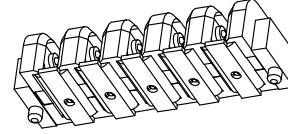
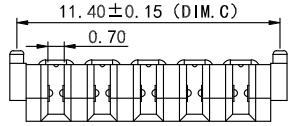


Rohs

REV.	DESCRIPTION	DRAW.	DATE.



No. of Pins	Dimension		
	DIM.A	DIM.B	DIM.C
02	6.00	2.00	5.40
03	8.00	4.00	7.40
04	10.00	6.00	9.40
05	12.00	8.00	11.40
06	14.00	10.00	13.40
07	16.00	12.00	15.40
08	18.00	14.00	17.40
09	20.00	16.00	19.40
10	22.00	18.00	21.40

Material:  
 Insulator : LCP(UL94V-0)  
 Contact : Phosphor Bronze  
 Contact Plated : Gold over Nickel or Tin  
 Specification:  
 Current Rating : 3A  
 Instant Current : 5A  
 Voltage Rating : 30V  
 Contact Resistance : 30m Ω  
 Insulation Resistance : 100M Ω  
 Dielectric Voltage : 500V  
 Operating Temperature : -25°~85°

**AUGO**

AUGO ELECTRONICS CO.,LTD.

COPYRIGHT RESERVED, PLEASE DO NOT COPY.

REV:	01	UNLESS OTHERWISE SPECIFIED, TOLERANCE:		TITLE:	BATTERY FEMALE 2.0PITCH BOARD TO BOARD CONNECTOR	DESIGN	G.C.CHEN	DATE	
SIZE:	A4	X.	±0.20	PART NO.:	AUGO-A00F-A-5P	DRAWING	Y.C.ZHANG	DATE	
SCALE: 1:1	UNIT: mm	X.x	±0.15			CHECK	D.J.WANG	DATE	
SHEET: 1/1		X.xx	±0.10			SCALE	1:1	PAGE	1 OF 1
		ANGULAR	±2°						